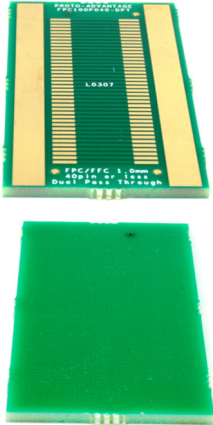
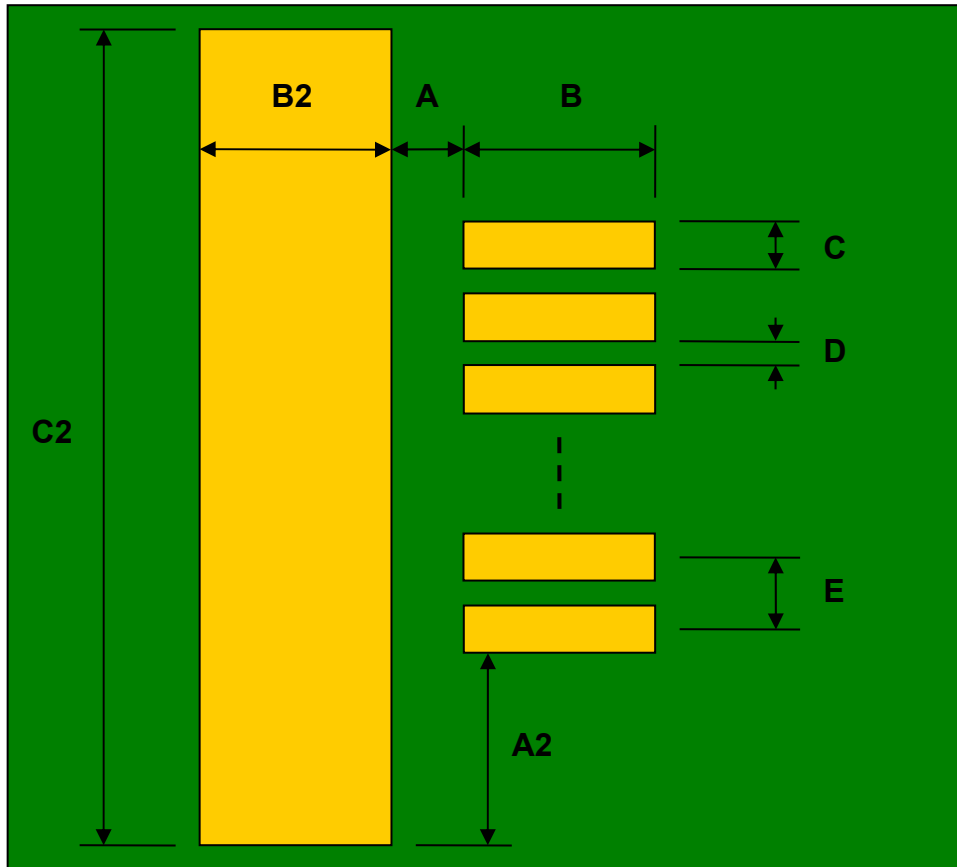


**FPC/FFC SMT Connector (1.00 mm pitch, 40 pins or less)  
Dual Pass-Through Adapter**



REF.	DIMENSIONS					
	mm			inches		
	MIN.	TYP.	MAX.	MIN.	TYP.	MAX.
A		1.00				
A2		5.00				
B		3.00				
C		0.65				
B2		4.00				
C2		49.65				
D		0.35				
E		1.00				

Top View (SMT Footprints, Both Footprints Are the Same)



(Representative drawing only - not to scale)