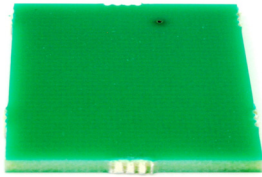
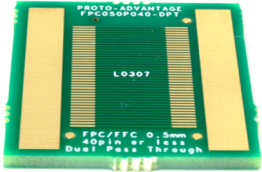
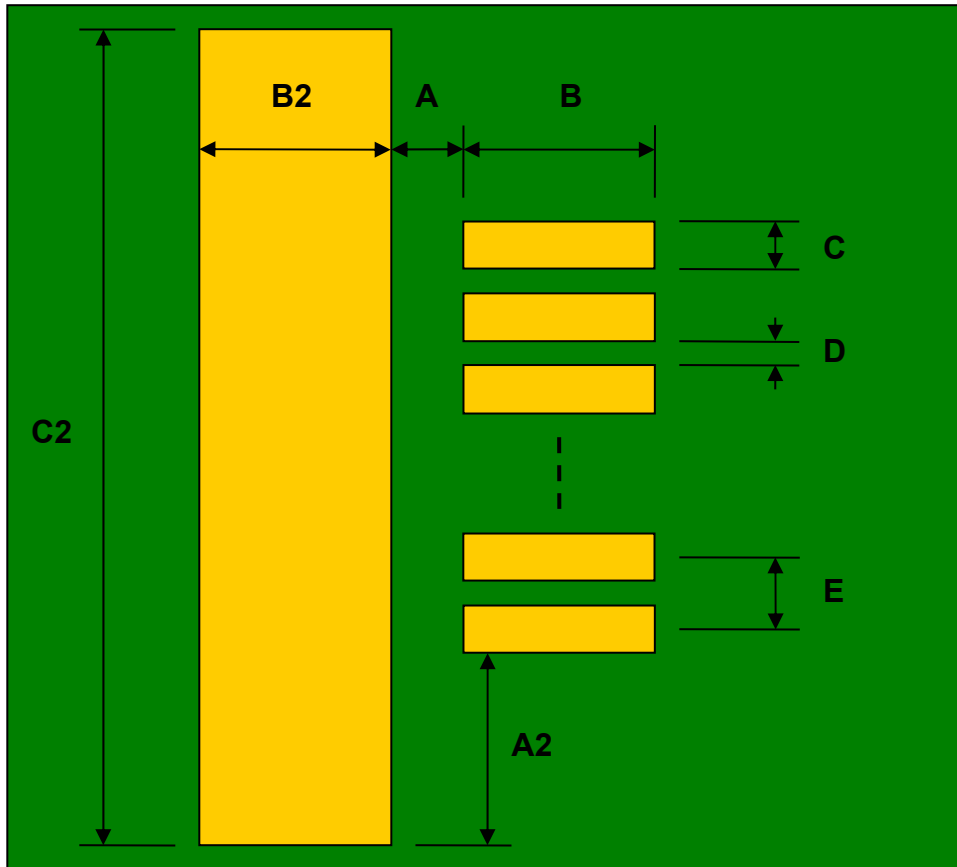


**FPC/FFC SMT Connector (0.50 mm pitch, 40 pins or less)  
Dual Pass-Through Adapter**



REF.	DIMENSIONS					
	mm			inches		
	MIN.	TYP.	MAX.	MIN.	TYP.	MAX.
A		1.00				
A2		4.00				
B		2.50				
C		0.30				
B2		4.00				
C2		27.80				
D		0.20				
E		0.50				

Top View (SMT Footprints, Both Footprints Are the Same)



(Representative drawing only - not to scale)