

SOICN-8 Socket to DIP-8 Adapter (3.9 mm body, 1.27 mm pitch)

Product Highlights

RoHS Compliant
Comes fully assembled
Immersion Gold PCB Finish
Gold plated DIP pins

Specifications

Top-side socket type:

PCB construction:

PCB operating temperature range:

PCB reflow maximum temperature:

PCB Assembly standard:

Bottom Side DIP pin spacing:

Proto-Advantage PA-SOCKET-SOICN-8-1.27

FR-4 UL94V-0

-40°C to +130°C

+260°C

IPC-A-610 Class II

0.1" (2.54mm) pitch, 0.3" (7.62mm) row-to-row

Product Images

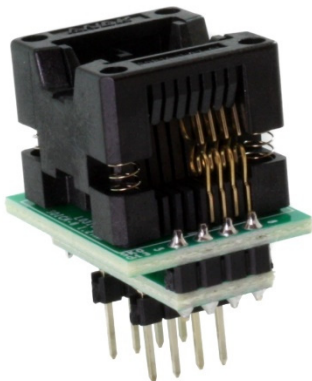


Image 1: Top View of Socket Adapter

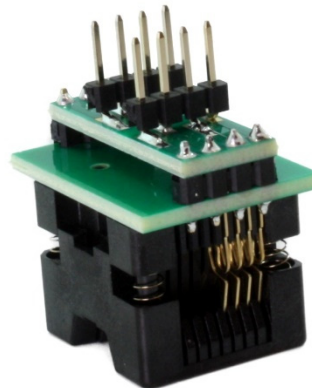


Image 2: Bottom View of Socket Adapter

Top Side Socket Drawing

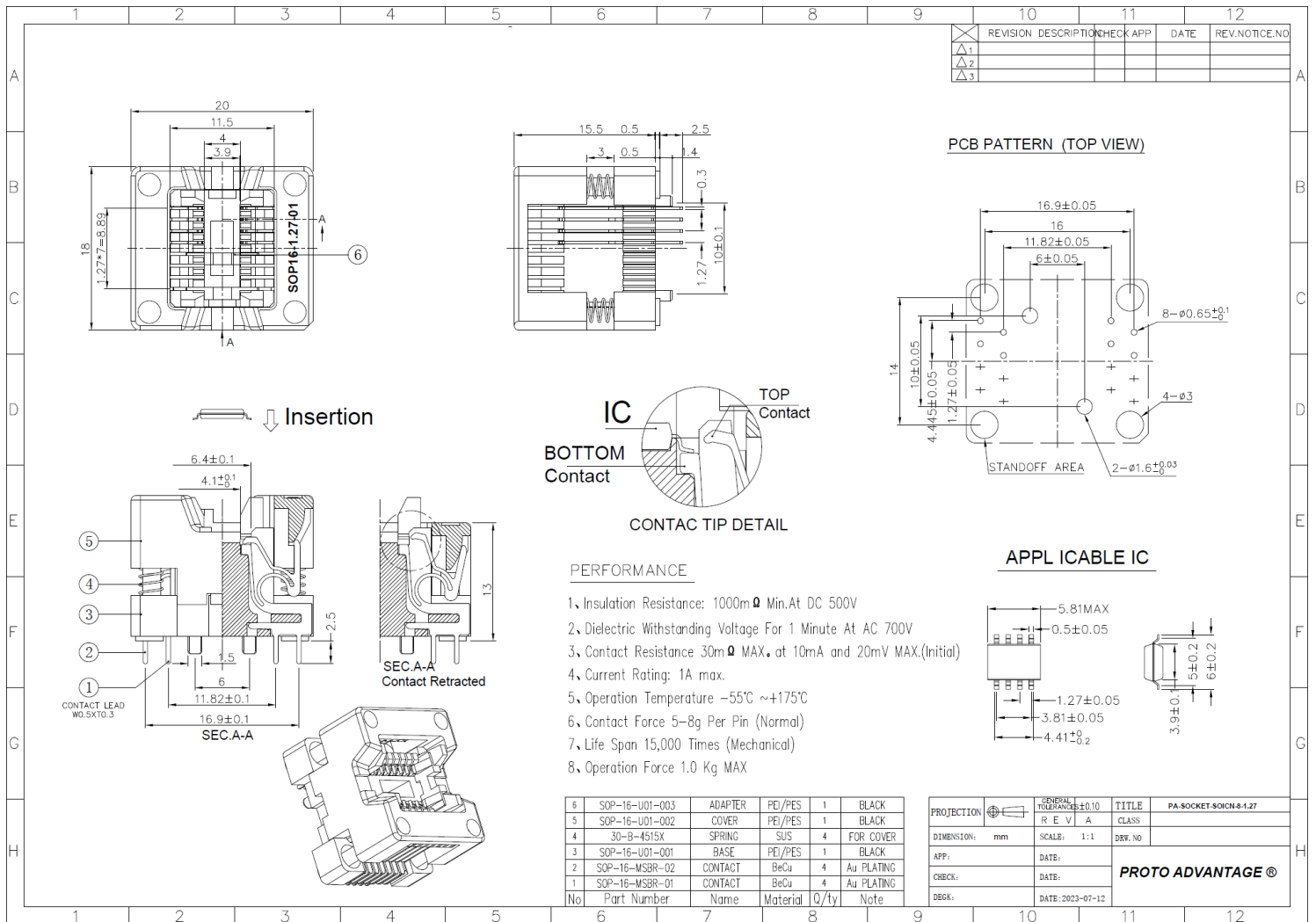


Image 3: Proto-Advantage PA-SOCKET-SOICN-8-1.27 Socket Drawing