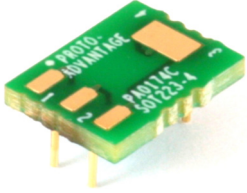


# PA0174C *Proto Advantage*

Datasheet revision 1.2

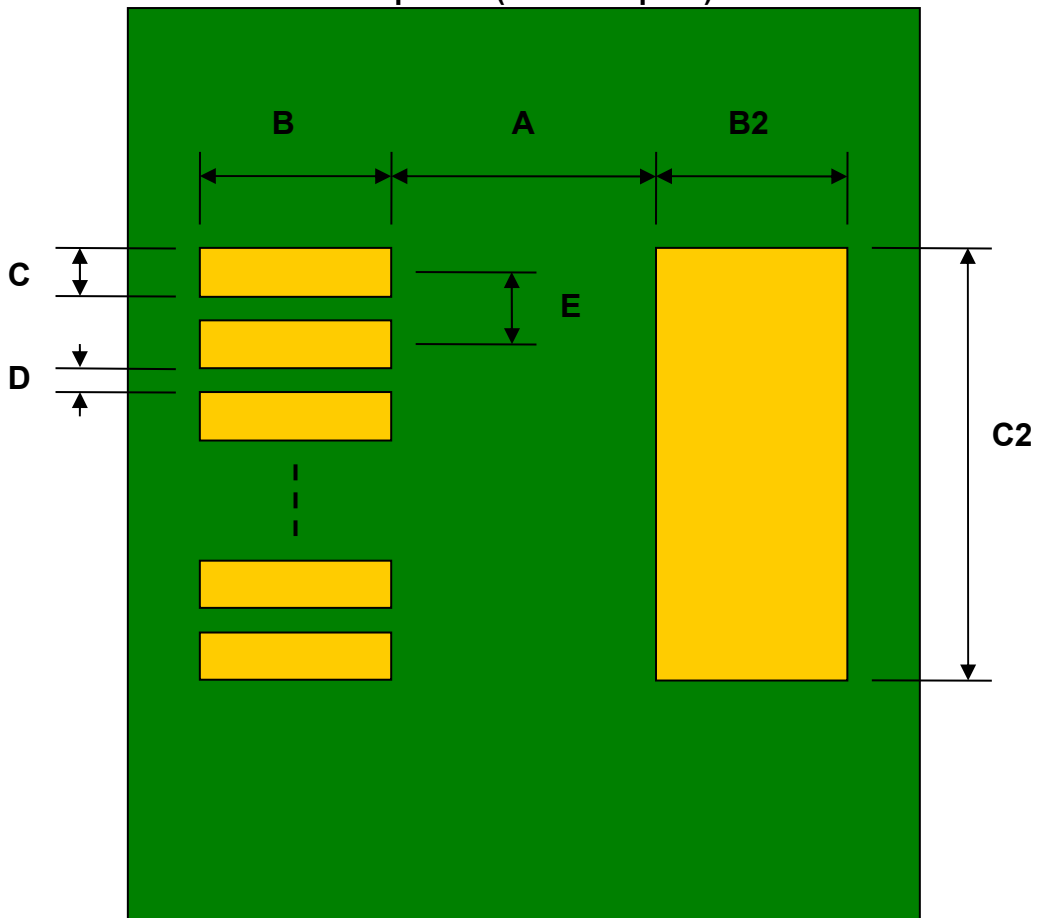
[www.Proto-Advantage.com](http://www.Proto-Advantage.com)

## SOT-223-4 to DIP-4 SMT Adapter (2.3 mm pitch, 3.56 x 6.50 mm body) *Compact Series*



REF.	DIMENSIONS					
	mm			inches		
	MIN.	TYP.	MAX.	MIN.	TYP.	MAX.
A		4.80				
B		2.00				
C		1.00				
B2		2.00				
C2		3.30				
D		1.30				
E		2.30				
F					0.300	
G					0.100	
H		0.46				
X					0.400	
Y					0.300	

Top View (SMT Footprint)



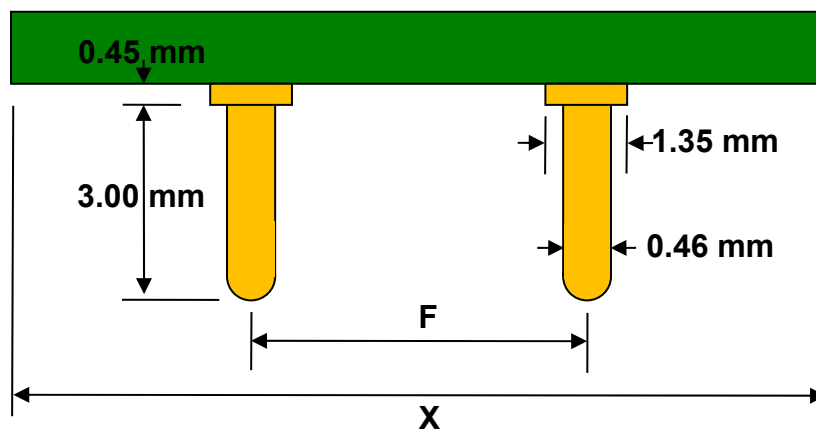
(Representative drawing only - not to scale)

### Bottom View (DIP Pins)



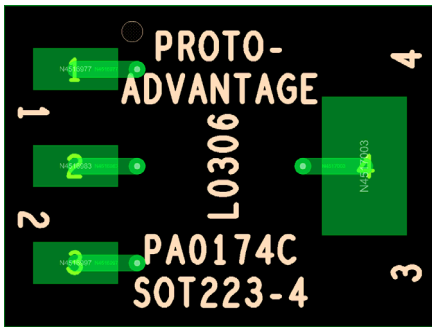
(Representative drawing only - not to scale)

### Side View (DIP Pins)



(Representative drawing only - not to scale)

### Adapter Pin Out (Top Side)



### Adapter Pin Out (Bottom Side) (X-Ray View)

