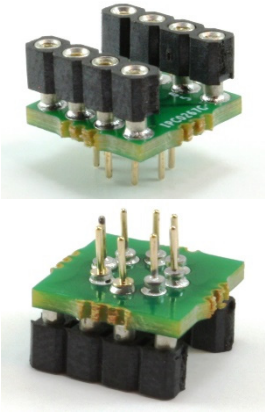


# IPC0267C *Proto Advantage*

Datasheet revision 1.1

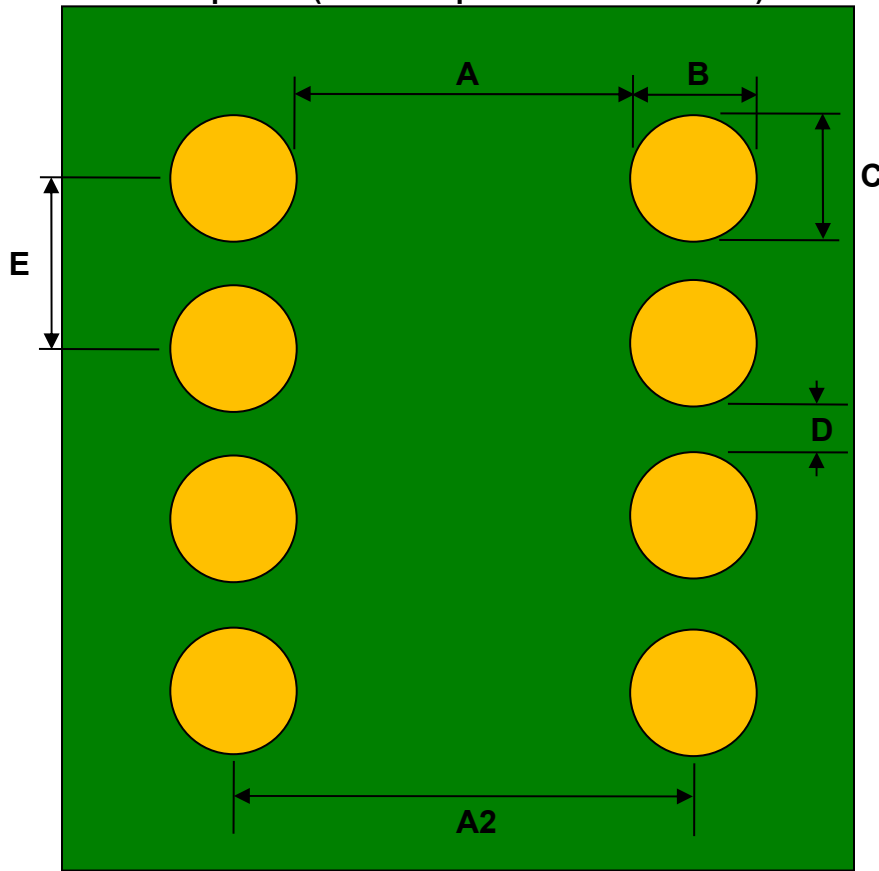
[www.Proto-Advantage.com](http://www.Proto-Advantage.com)

## DIP-8 Socket to TO-8 SMT Adapter (2.54 mm pitch, 300 mil body) *Compact Series*



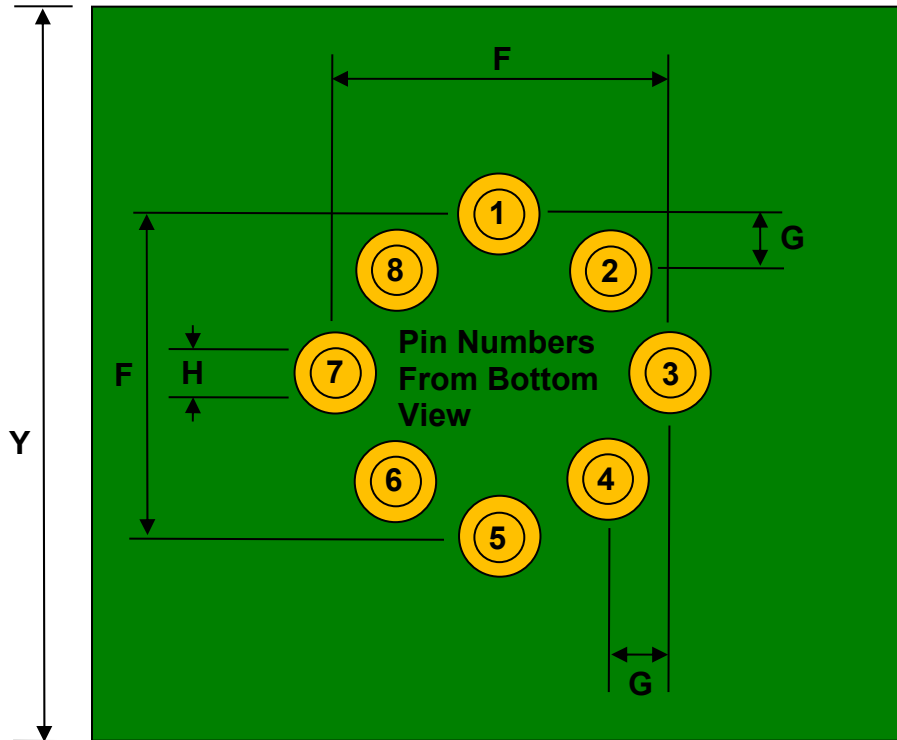
REF.	DIMENSIONS					
	mm			inches		
	MIN.	TYP.	MAX.	MIN.	TYP.	MAX.
A		5.62				
A2		7.62			0.300	
B		2.00				
C		2.00				
D		0.54				
E		2.54			0.100	
F		5.08			0.200	
G		0.744			0.029	
H		0.46				
X					0.400	
Y					0.400	

Top View (SMT Footprint for DIP-8 Socket)



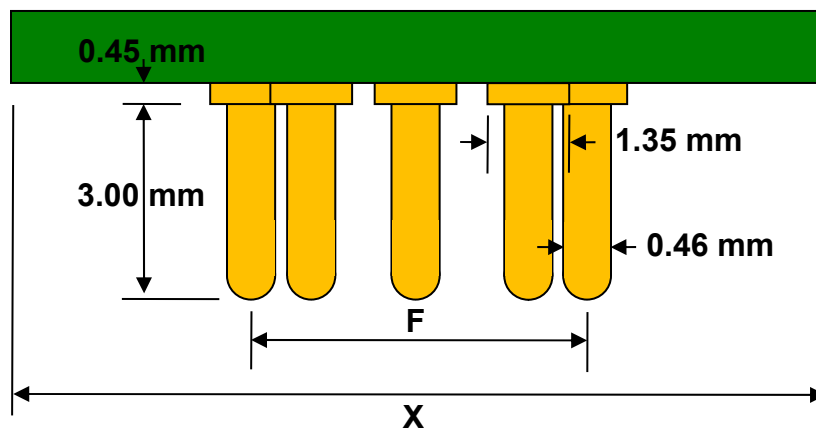
(Representative drawing only - not to scale)

### Bottom View (TO-8 Pins)



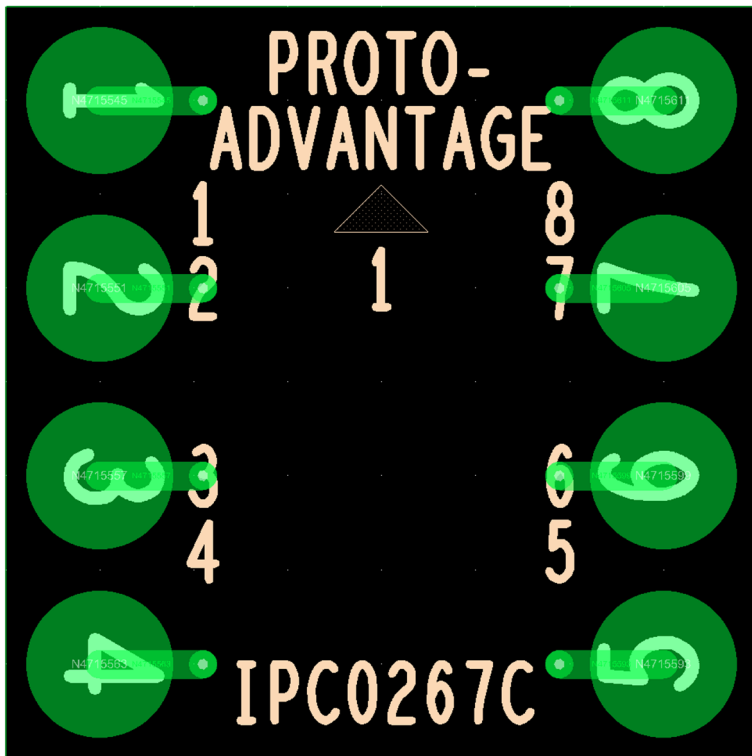
(Representative drawing only - not to scale)

### Side View (TO-8 Pins)

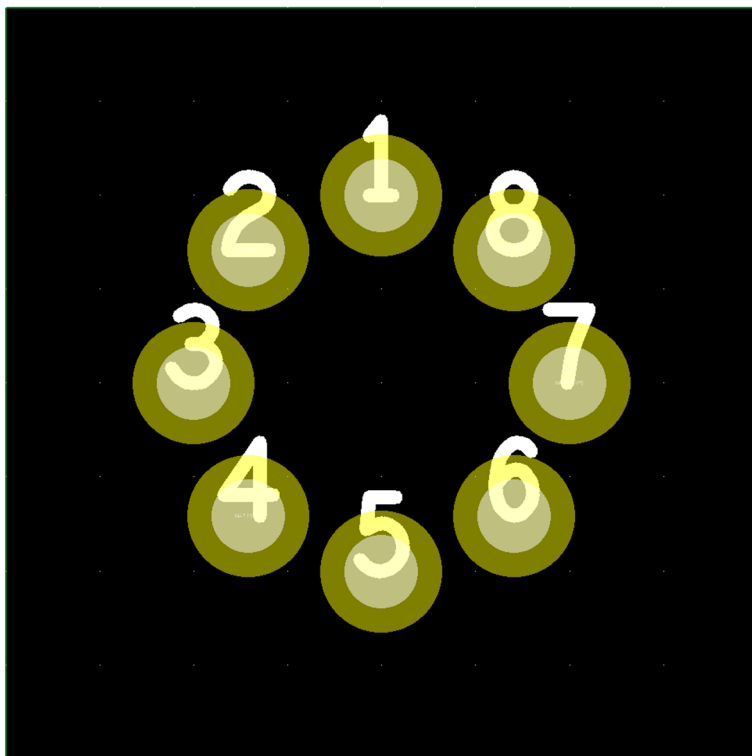


(Representative drawing only - not to scale)

### Adapter Pin Out (Top Side)



### Adapter Pin Out (Bottom Side) (X-Ray View)



## Adapter Bottom Side Pin Hole Positions in mm

Adapter center position: (0, 0)

Pin 1: (0, 2.54)

Pin 2: (-1.796, 1.796)

Pin 3: (-2.54, 0)

Pin 4: (-1.796, -1.796)

Pin 5: (0, -2.54)

Pin 6: (1.796, -1.796)

Pin 7: (2.54, 0)

Pin 8: (1.796, 1.796)