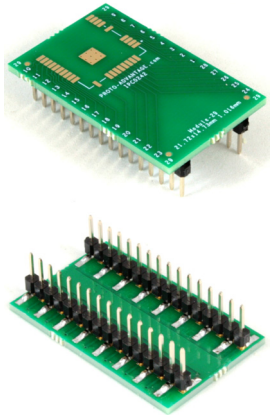
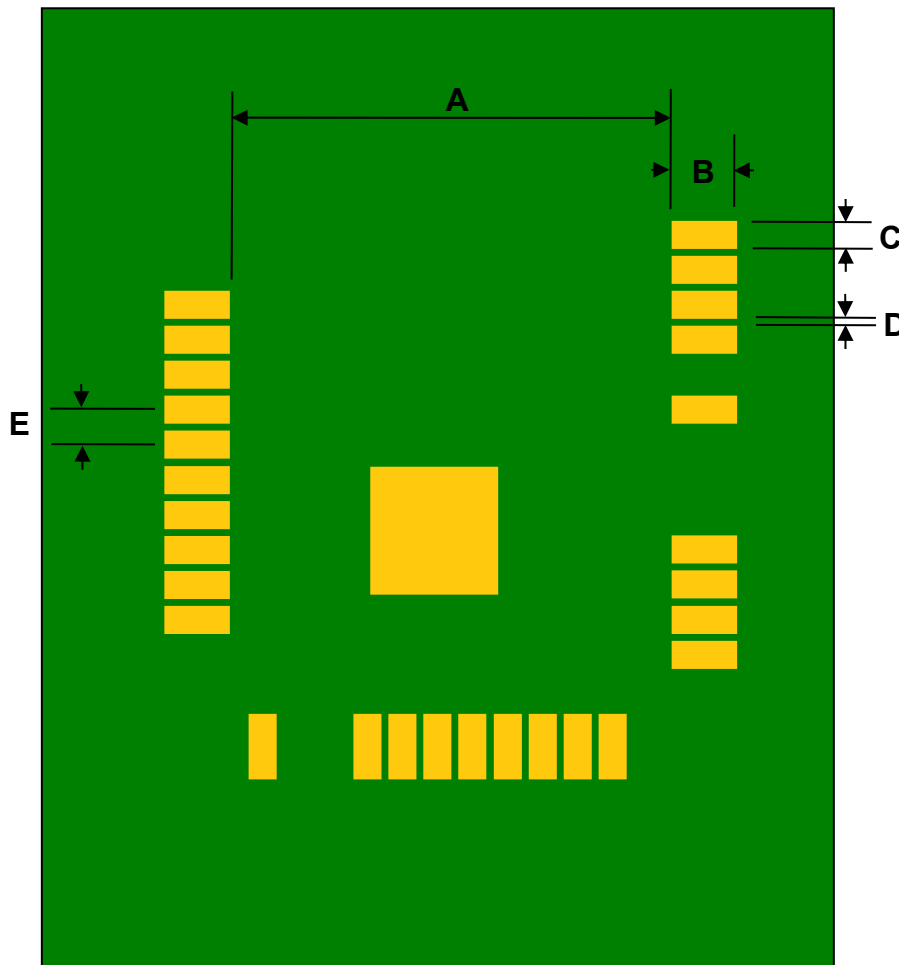


Module-29 to DIP-32 SMT Adapter (1.016 mm pitch, 21.72 x 14.73 mm body)



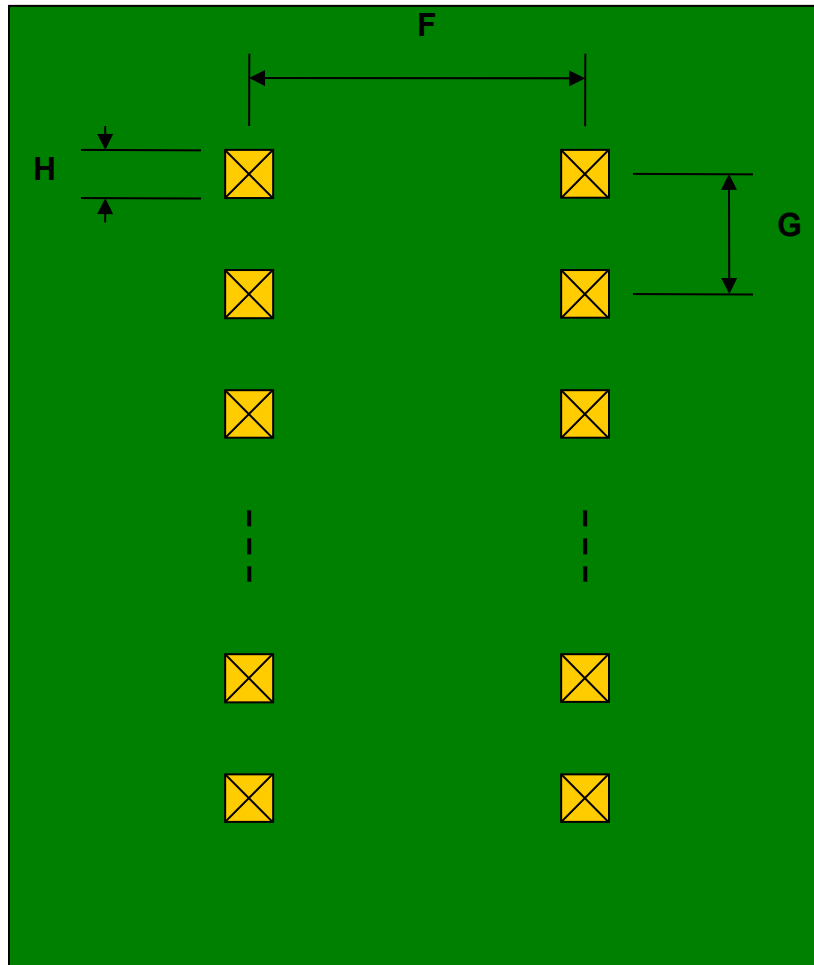
REF.	DIMENSIONS					
	mm			inches		
	MIN.	TYP.	MAX.	MIN.	TYP.	MAX.
A		12.83				
B		1.90				
C		0.80				
D		0.216				
E		1.016			0.040	
F					0.600	
G					0.100	
H					0.025	

Top View (SMT Footprint)



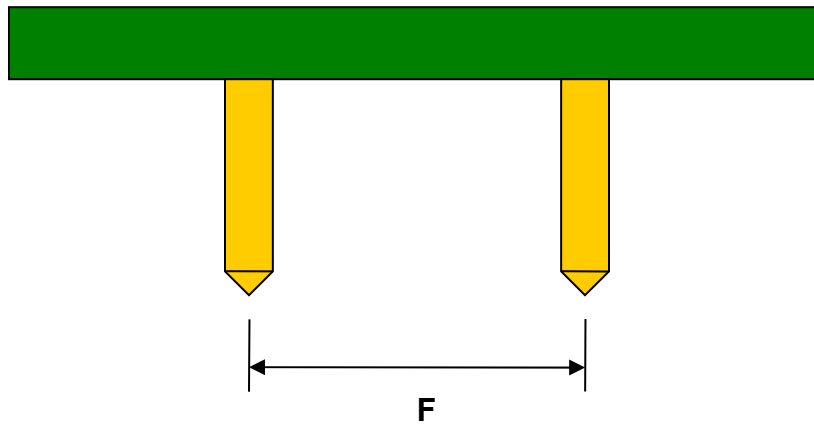
(Representative drawing only - not to scale)

Bottom View (DIP Pins)



(Representative drawing only - not to scale)

Side View (DIP Pins)



(Representative drawing only - not to scale)