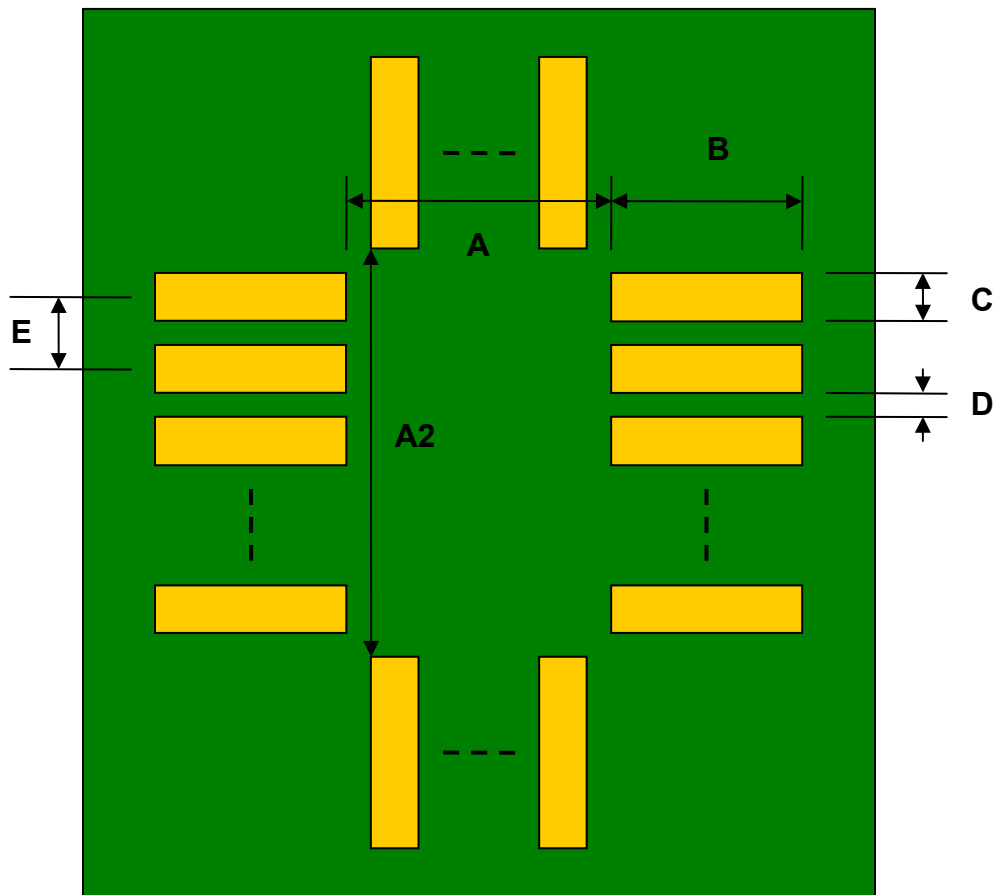


## LGA-14 to DIP-14 SMT Adapter (0.5 mm pitch, 2.5 x 3.0 mm body)

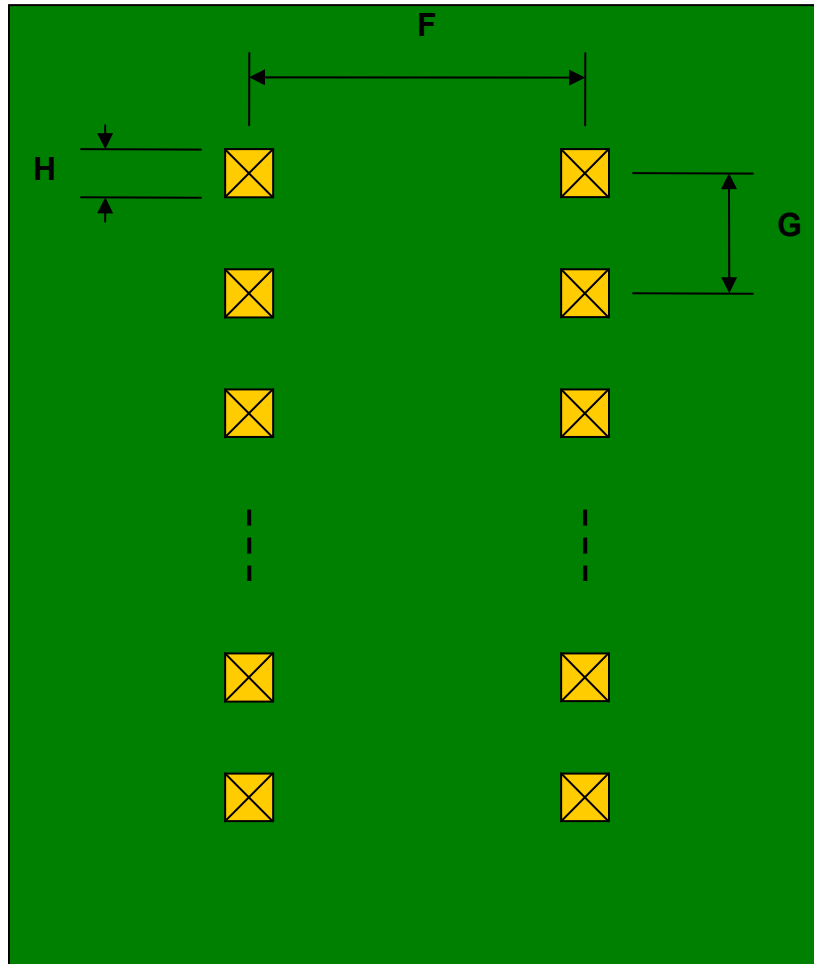
REF.	DIMENSIONS					
	mm			inches		
	MIN.	TYP.	MAX.	MIN.	TYP.	MAX.
A		1.70				
A2		1.20				
B		0.80				
C		0.28				
D		0.22				
E		0.50				
F					0.300	
G					0.100	
H					0.025	

Top View (SMT Footprint)



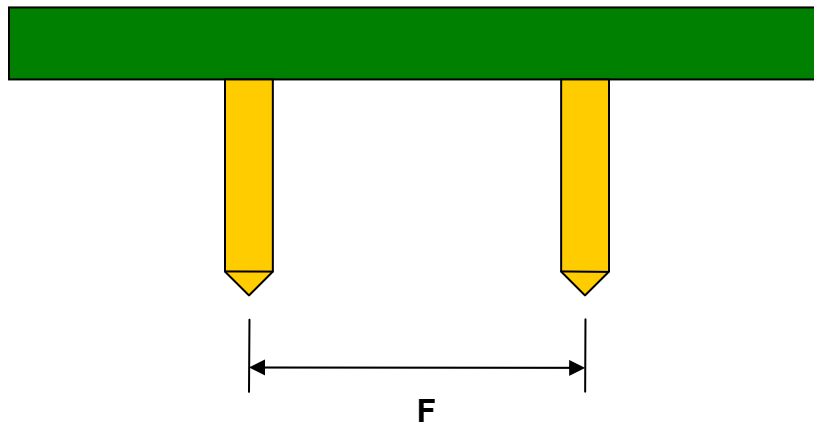
(Representative drawing only - not to scale)

### Bottom View (DIP Pins)



(Representative drawing only - not to scale)

### Side View (DIP Pins)



(Representative drawing only - not to scale)