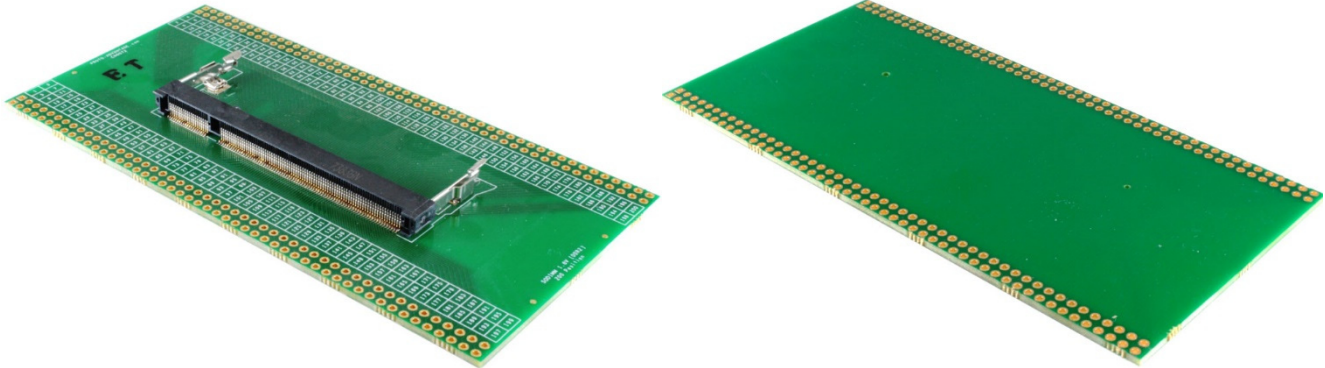


200 Position SODIMM DDR2 (1.8V) SDRAM adapter board



Product Highlights

This adapter comes assembled with connector as shown.

Specifications

PCB dimensions:	5.05" x 2.5" x 0.063" (128.27mm x 63.5mm x 1.6mm)
PCB construction:	FR-4 UL94V-0
PCB operating temperature range (without connector):	-40°C to +130°C
PCB reflow maximum temperature (without connector):	+260°C
PCB assembly standard:	IPC-A-610 Class II
Plated through hole pin pitch:	0.1" (2.54mm)
Plated through hole row spacing (hole-center to hole-center):	0.1" (2.54mm), 2.2" (55.88mm), 0.1" (2.54mm)